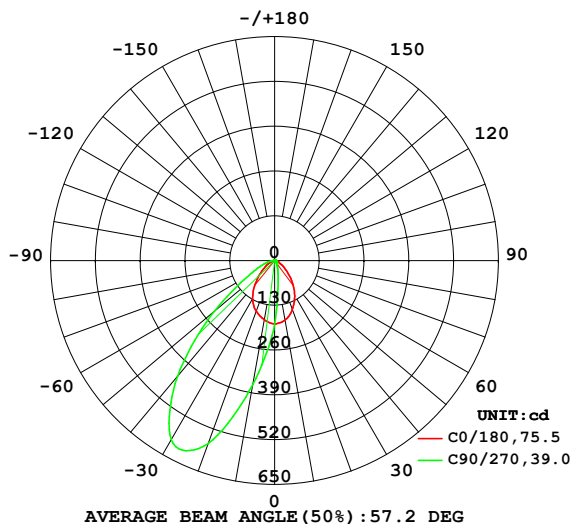


## LUMINAIRE PHOTOMETRIC TEST REPORT

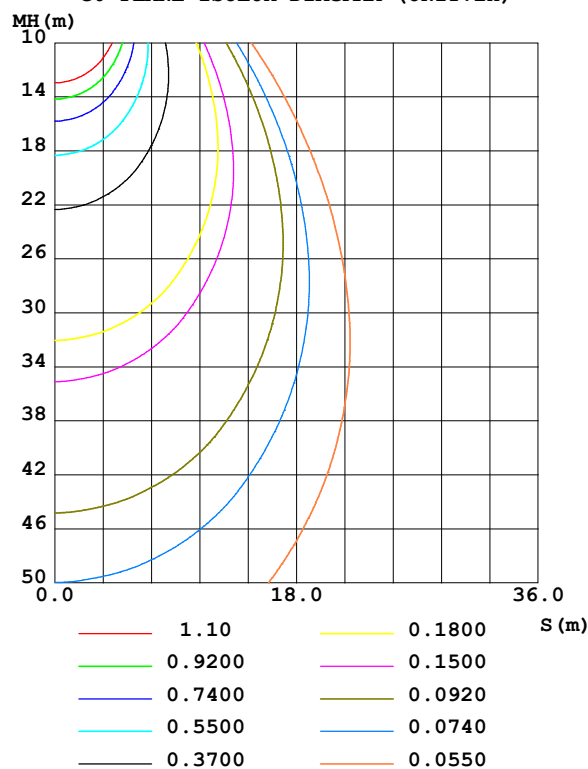
Test:U:230.73V I:0.1021A P:12.699W PF:0.5390 Freq:49.99Hz UTHDi:0.00% ITHDi:0.00% KDisp:0 Lamp Flux:576.442x1 lm		
NAME: DL3871 12W Ra97 3000K	TYPE:	WEIGHT:
SPEC.:	DIM.:	SERIAL No.:
MFR.: VJC Lighting	SUR.: 50	Shielding Angle:

DATA OF LAMP		PHOTOMETRIC DATA Eff: 45.39 lm/W			
MODEL	DL3871 12W Ra97 3000K	I <sub>max</sub> (cd)	613.1	S/MH(C0/180)	1.08
NOMINAL POWER(W)	12	LOR(%)	100.0	S/MH(C90/270)	1.80
RATED VOLTAGE(V)	220	TOTAL FLUX(lm)	576.44	η UP,DN(C0-180)	0.5,9.4
NOMINAL FLUX(lm)	576.442	CIE CLASS	DIRECT	η UP,DN(C180-360)	0.2,89.9
LAMPS INSIDE	1	η up (%)	0.6	CIBSE SHR NOM	0.75
TEST VOLTAGE(V)	220	η down (%)	99.4	CIBSE SHR MAX	0.85

LUMINOUS INTENSITY DISTRIBUTION DIAGRAM



C0 PLANE ISOLUX DIAGRAM (UNIT:lx)



C Range: 0 - 360DEG  
C Interval: 22.5DEG  
Test Speed: HIGH  
Temperature: 25.3 °C  
Operators: 001  
Test Date: 2024-03-01

γ Range: 0 - 180DEG  
γ Interval: 1.0DEG  
Test System: EVERFINE GO-2000B\_V1 SYSTEM V2.00.456  
Humidity: 65.0%  
Test Distance: 7.580m [K=1.0000]  
Remarks:

## ZONAL FLUX DIAGRAM

## ZONAL FLUX DIAGRAM:

$\gamma$	C0	C45	C90	C135	C180	C225	C270	C315	$\gamma$	$\Phi$ zone	$\Phi$ total	%lum, lamp
10	175.4	82.52	60.44	80.71	174.6	299.9	364.9	298.0	0- 10	17.79	17.79	3.09,3.09
20	151.1	43.99	27.87	43.08	157.0	428.6	564.3	408.3	10- 20	59.70	77.49	13.4,13.4
30	117.3	27.54	14.67	27.37	128.4	529.9	600.2	477.3	20- 30	109.5	187.0	32.4,32.4
40	78.38	15.42	8.973	15.85	87.53	498.0	439.0	423.6	30- 40	136.6	323.7	56.1,56.1
50	44.23	8.324	6.117	8.683	49.73	338.1	227.7	290.3	40- 50	119.8	443.4	76.9,76.9
60	22.66	5.044	3.931	5.314	25.91	166.7	87.69	151.1	50- 60	75.70	519.1	90.1,90.1
70	11.63	2.907	2.089	3.114	13.14	61.81	37.29	55.80	60- 70	36.74	555.9	96.4,96.4
80	4.984	0.9672	0.0794	1.281	6.108	16.65	12.86	12.61	70- 80	14.54	570.4	99,99
90	0.0317	0.1074	0.0595	0.0821	0.0749	0.1209	0.0935	0.0519	80- 90	2.291	572.7	99.4,99.4
100	0.0770	0.3039	0.2013	0.2437	0.1655	0.0298	0	0.0000	90-100	0.0953	572.8	99.4,99.4
110	0.1879	0.6445	0.5058	0.5194	0.3084	0.0504	0.0115	0.0205	100-110	0.2050	573.0	99.4,99.4
120	0.3624	1.068	1.007	0.8637	0.5169	0.0915	0.0321	0.0593	110-120	0.3762	573.4	99.5,99.5
130	0.5730	1.445	1.610	1.215	0.7594	0.1694	0.0688	0.1278	120-130	0.5513	573.9	99.6,99.6
140	0.7747	1.669	2.036	1.486	0.9974	0.3273	0.1490	0.2670	130-140	0.6582	574.6	99.7,99.7
150	0.9833	1.777	2.169	1.700	1.219	0.5905	0.3394	0.5156	140-150	0.6628	575.2	99.8,99.8
160	1.239	1.946	2.233	1.928	1.423	0.9726	0.7313	0.8828	150-160	0.5877	575.8	99.9,99.9
170	1.513	2.061	2.316	2.006	1.609	1.457	1.336	1.350	160-170	0.4404	576.3	100,100
180	1.670	1.908	1.972	1.783	1.679	1.896	1.966	1.778	170-180	0.1671	576.4	100,100
DEG	LUMINOUS INTENSITY:cd									UNIT:lm		

Conical surface Flux(90deg): 388.16 lm

%lum = 67.3%

%lamp = 67.3%

Conical surface Flux(130deg): 541.28 lm

%lum = 93.9%

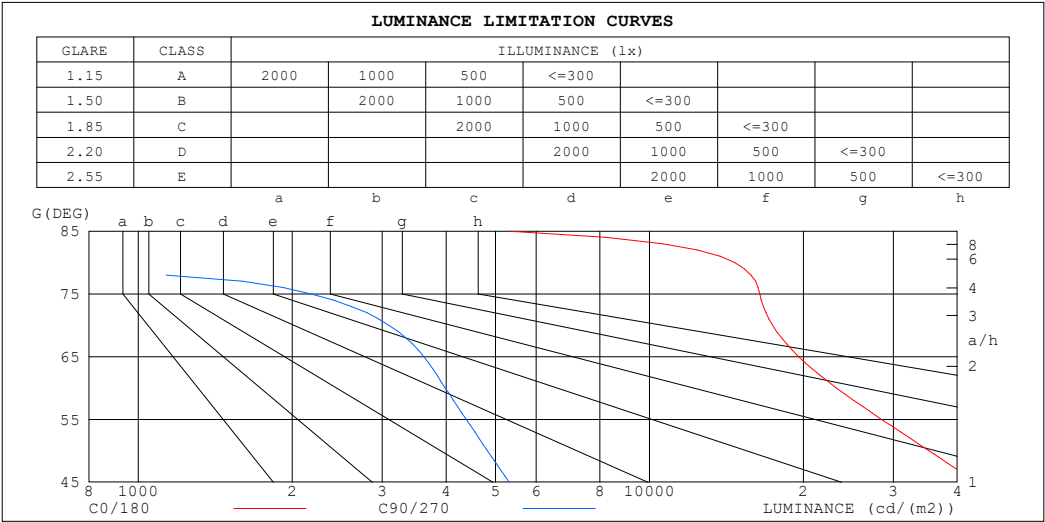
%lamp = 93.9%

C Range: 0 - 360DEG  
C Interval: 22.5DEG  
Test Speed: HIGH  
Temperature:25.3℃  
Operators:001  
Test Date:2024-03-01

$\gamma$  Range: 0 - 180DEG  
 $\gamma$  Interval: 1.0DEG  
Test System:EVERFINE GO-2000B\_V1 SYSTEM V2.00.456  
Humidity:65.0%  
Test Distance:7.580m [K=1.0000]  
Remarks:

LUMINANCE LIMITATION CURVES

Test:U:230.73V I:0.1021A P:12.699W PF:0.5390 Freq:49.99Hz		
UTHDi:0.00% ITHDi:0.00% KDisp:0 Lamp Flux:576.442x1 lm		
NAME: DL3871 12W Ra97 3000K	TYPE:	WEIGHT:
SPEC.:	DIM.:	SERIAL No.:
MFR.: VJC Lighting	SUR.: 50	Shielding Angle:



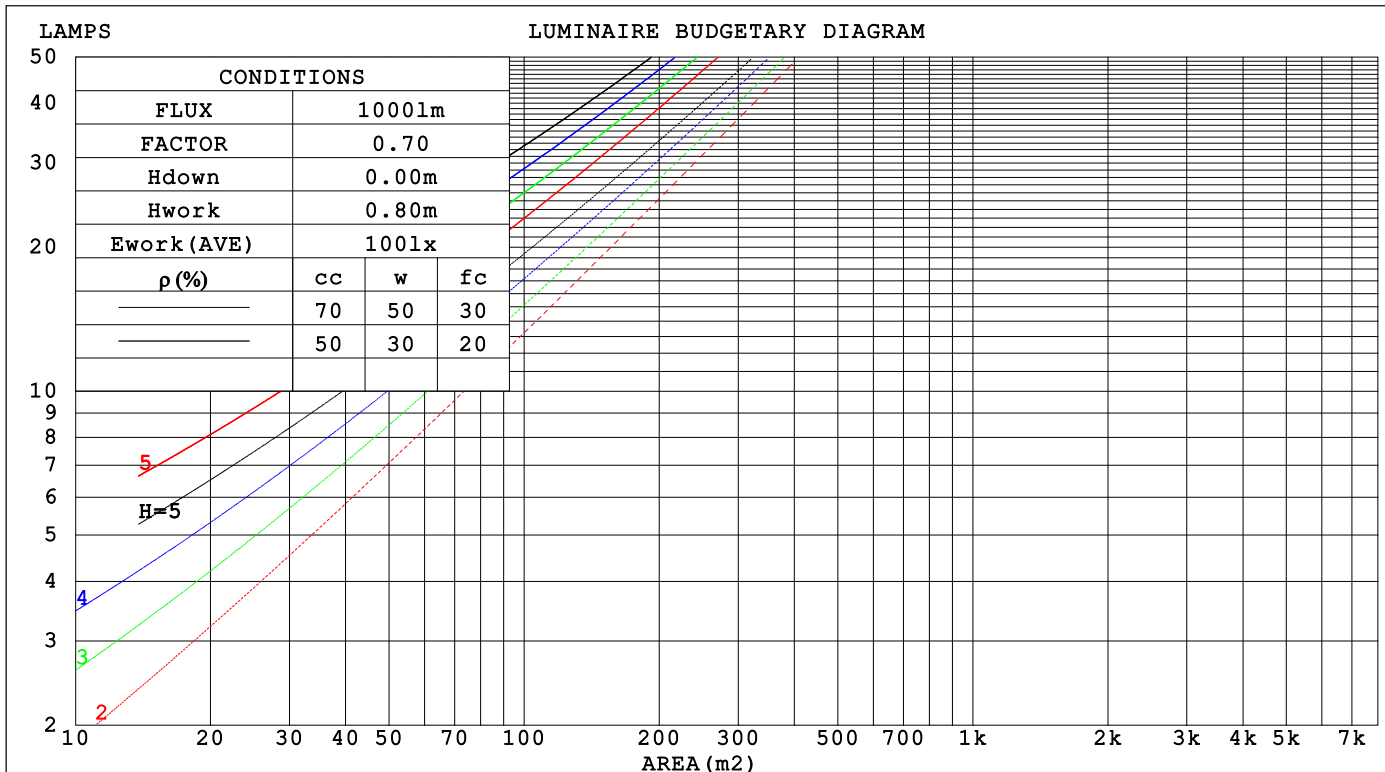
LUMINANCE cd/(m2)		
G (DEG)	C0/180	C90/270
85	5341	160
80	14697	232
75	16432	2179
70	17410	3094
65	19579	3619
60	23208	3982
55	28460	4382
50	35235	4821
45	43431	5316

C Range: 0 - 360DEG	γ Range: 0 - 180DEG
C Interval: 22.5DEG	γ Interval: 1.0DEG
Test Speed: HIGH	Test System:EVERFINE GO-2000B_V1 SYSTEM V2.00.456
Temperature:25.3℃	Humidity:65.0%
Operators:001	Test Distance:7.580m [K=1.0000]
Test Date:2024-03-01	Remarks:

## CU AND LUMINAIRE BUDGETARY ESTIMATE DIAGRAM

Test:U:230.73V I:0.1021A P:12.699W PF:0.5390 Freq:49.99Hz		
UTHDi:0.00% ITHDi:0.00% KDisp:0 Lamp Flux:576.442x1 lm		
NAME: DL3871 12W Ra97 3000K	TYPE:	WEIGHT:
SPEC.:	DIM.:	SERIAL No.:
MFR.: VJC Lighting	SUR.: 50	Shielding Angle:

pcc	80%			70%			50%			30%			10%			0
pw	50%	30%	10%	50%	30%	10%	50%	30%	10%	50%	30%	10%	50%	30%	10%	0
pfc	20%			20%			20%			20%			20%			0
RCR	RCR:Room Cavity Ratio															



C Range: 0 - 360DEG  
C Interval: 22.5DEG  
Test Speed: HIGH  
Temperature:25.3℃  
Operators:001  
Test Date:2024-03-01

γ Range: 0 - 180DEG  
γ Interval: 1.0DEG  
Test System:EVERFINE GO-2000B\_V1 SYSTEM V2.00.456  
Humidity:65.0%  
Test Distance:7.580m [K=1.0000]  
Remarks:

## WEC AND CCEC

Test:U:230.73V I:0.1021A P:12.699W PF:0.5390 Freq:49.99Hz		
UTHDi:0.00% ITHDi:0.00% KDisp:0 Lamp Flux:576.442x1 lm		
NAME: DL3871 12W Ra97 3000K	TYPE:	WEIGHT:
SPEC.:	DIM.:	SERIAL No.:
MFR.: VJC Lighting	SUR.: 50	Shielding Angle:

pcc	80%			70%			50%			30%			10%			0	
pw	50%	30%	10%	50%	30%	10%	50%	30%	10%	50%	30%	10%	50%	30%	10%	0	
pfc	20%			20%			20%			20%			20%			0	
RCR	RCR:Room Cavity Ratio						Wall Exitance Coefficients(WEC)										
0.0																	
1.0	.254	.145	.046	.247	.141	.045	.234	.134	.043	.221	.128	.041	.210	.122	.039		
2.0	.247	.136	.042	.241	.133	.041	.230	.128	.040	.219	.123	.038	.209	.118	.037		
3.0	.235	.125	.037	.230	.123	.037	.219	.119	.036	.210	.115	.035	.201	.111	.034		
4.0	.222	.115	.034	.217	.113	.034	.208	.110	.033	.199	.107	.032	.191	.104	.032		
5.0	.208	.106	.031	.204	.105	.031	.196	.102	.030	.189	.100	.030	.182	.097	.029		
6.0	.196	.098	.028	.192	.097	.028	.185	.095	.028	.178	.093	.027	.172	.091	.027		
7.0	.185	.091	.026	.181	.090	.026	.175	.088	.025	.169	.087	.025	.163	.085	.025		
8.0	.174	.085	.024	.171	.084	.024	.165	.083	.024	.160	.081	.023	.155	.079	.023		
9.0	.165	.080	.022	.162	.079	.022	.157	.077	.022	.152	.076	.022	.147	.075	.022		
10.0	.156	.075	.021	.153	.074	.021	.149	.073	.021	.144	.072	.020	.140	.070	.020		

pcc	80%			70%			50%			30%			10%			0
pw	50%	30%	10%	50%	30%	10%	50%	30%	10%	50%	30%	10%	50%	30%	10%	0
pfc	20%			20%			20%			20%			20%			0
RCR	RCR:Room Cavity Ratio						Ceiling Cavity Exitance Coefficients (CCEC)									
0.0	.195	.195	.195	.167	.167	.167	.114	.114	.114	.065	.065	.065	.021	.021	.021	
1.0	.181	.162	.144	.155	.139	.124	.106	.095	.086	.061	.055	.050	.020	.018	.016	
2.0	.171	.137	.108	.147	.118	.094	.101	.082	.065	.058	.048	.038	.019	.015	.012	
3.0	.163	.119	.084	.140	.103	.073	.096	.071	.051	.055	.042	.030	.018	.014	.010	
4.0	.155	.105	.067	.133	.091	.059	.092	.063	.041	.053	.037	.024	.017	.012	.008	
5.0	.148	.095	.056	.127	.082	.048	.088	.057	.034	.051	.034	.020	.016	.011	.007	
6.0	.141	.086	.047	.122	.075	.041	.084	.052	.029	.049	.031	.017	.016	.010	.006	
7.0	.135	.079	.040	.116	.069	.035	.080	.048	.025	.047	.028	.015	.015	.009	.005	
8.0	.129	.074	.035	.111	.064	.031	.077	.045	.022	.045	.026	.013	.015	.009	.004	
9.0	.124	.069	.031	.107	.060	.027	.074	.042	.019	.043	.025	.012	.014	.008	.004	
10.0	.119	.064	.028	.102	.056	.025	.071	.039	.018	.041	.023	.011	.013	.008	.003	

C Range: 0 - 360DEG  
C Interval: 22.5DEG  
Test Speed: HIGH  
Temperature:25.3℃  
Operators:001  
Test Date:2024-03-01

γ Range: 0 - 180DEG  
γ Interval: 1.0DEG  
Test System:EVERFINE GO-2000B\_V1 SYSTEM V2.00.456  
Humidity:65.0%  
Test Distance:7.580m [K=1.0000]  
Remarks:

UGR(Unified Glare Rating) Table

Test:U:230.73V I:0.1021A P:12.699W PF:0.5390 Freq:49.99Hz UTHDi:0.00% ITHDi:0.00% KDisp:0 Lamp Flux:576.442x1 lm											
NAME: DL3871 12W Ra97 3000K						TYPE:			WEIGHT:		
SPEC.:						DIM.:			SERIAL No.:		
MFR.: VJC Lighting						SUR.: 50			Shielding Angle:		
ceiling/cavity	0.7	0.7	0.5	0.5	0.3	0.7	0.7	0.5	0.5	0.3	
walls	0.5	0.3	0.5	0.3	0.3	0.5	0.3	0.5	0.3	0.3	
working plane	0.2	0.2	0.2	0.2	0.2	0.2	0.2	0.2	0.2	0.2	
Room dimensions		Viewed crosswise					Viewed endwise				
x = 2H y = 2H		19.2	20.6	19.5	20.8	21.0	10.2	11.6	10.5	11.8	12.0
3H		20.3	21.6	20.6	21.8	22.1	11.0	12.3	11.3	12.5	12.8
4H		20.9	22.1	21.2	22.3	22.6	11.3	12.5	11.6	12.7	13.0
6H		21.4	22.5	21.7	22.8	23.0	11.3	12.4	11.6	12.6	12.9
8H		21.5	22.6	21.8	22.9	23.2	11.2	12.3	11.5	12.6	12.9
12H		21.5	22.5	21.9	22.8	23.1	11.2	12.2	11.5	12.5	12.8
4H 2H		19.0	20.2	19.4	20.5	20.7	11.2	12.4	11.5	12.6	12.9
3H		20.3	21.3	20.6	21.6	21.9	12.1	13.1	12.5	13.4	13.7
4H		20.9	21.9	21.3	22.2	22.5	12.4	13.3	12.8	13.6	14.0
6H		21.6	22.4	22.0	22.7	23.1	12.4	13.2	12.8	13.6	13.9
8H		21.8	22.5	22.2	22.9	23.3	12.4	13.1	12.8	13.5	13.9
12H		21.8	22.5	22.2	22.9	23.3	12.3	13.0	12.7	13.4	13.8
8H 4H		20.8	21.6	21.3	22.0	22.4	12.9	13.7	13.3	14.1	14.4
6H		21.5	22.2	22.0	22.6	23.0	13.0	13.6	13.4	14.0	14.5
8H		21.8	22.3	22.2	22.8	23.2	12.9	13.5	13.4	13.9	14.4
12H		21.8	22.3	22.3	22.8	23.3	12.9	13.4	13.4	13.8	14.3
12H 4H		20.8	21.5	21.2	21.9	22.3	13.0	13.7	13.5	14.1	14.5
6H		21.5	22.0	22.0	22.5	22.9	13.1	13.7	13.6	14.1	14.6
8H		21.7	22.2	22.2	22.7	23.2	13.1	13.6	13.6	14.0	14.5
Variations with the observer position at spacings(CIE Pub.117):											
S = 1.0H		+ 1.6 / - 0.8					+ 0.5 / - 0.6				
1.5H		+ 2.7 / - 1.8					+ 0.3 / - 0.4				
2.0H		+ 3.8 / - 2.4					+ 0.4 / - 0.6				

CIE Pub.117, 576.4 lm Total Lamp Luminous Flux Correct (8log(F/F0) = -1.9)  
Area: 0.00196 m2

C Range: 0 - 360DEG  
C Interval: 22.5DEG  
Test Speed: HIGH  
Temperature:25.3℃  
Operators:001  
Test Date:2024-03-01

γ Range: 0 - 180DEG  
γ Interval: 1.0DEG  
Test System:EVERFINE GO-2000B\_V1 SYSTEM V2.00.456  
Humidity:65.0%  
Test Distance:7.580m [K=1.0000]  
Remarks:

## UTILIZATION FACTORS TABLE

Test:U:230.73V I:0.1021A P:12.699W PF:0.5390 Freq:49.99Hz UTHDi:0.00% ITHDi:0.00% KDisp:0 Lamp Flux:576.442x1 lm		
NAME: DL3871 12W Ra97 3000K	TYPE:	WEIGHT:
SPEC.:	DIM.:	SERIAL No.:
MFR.: VJC Lighting	SUR.: 50	Shielding Angle:

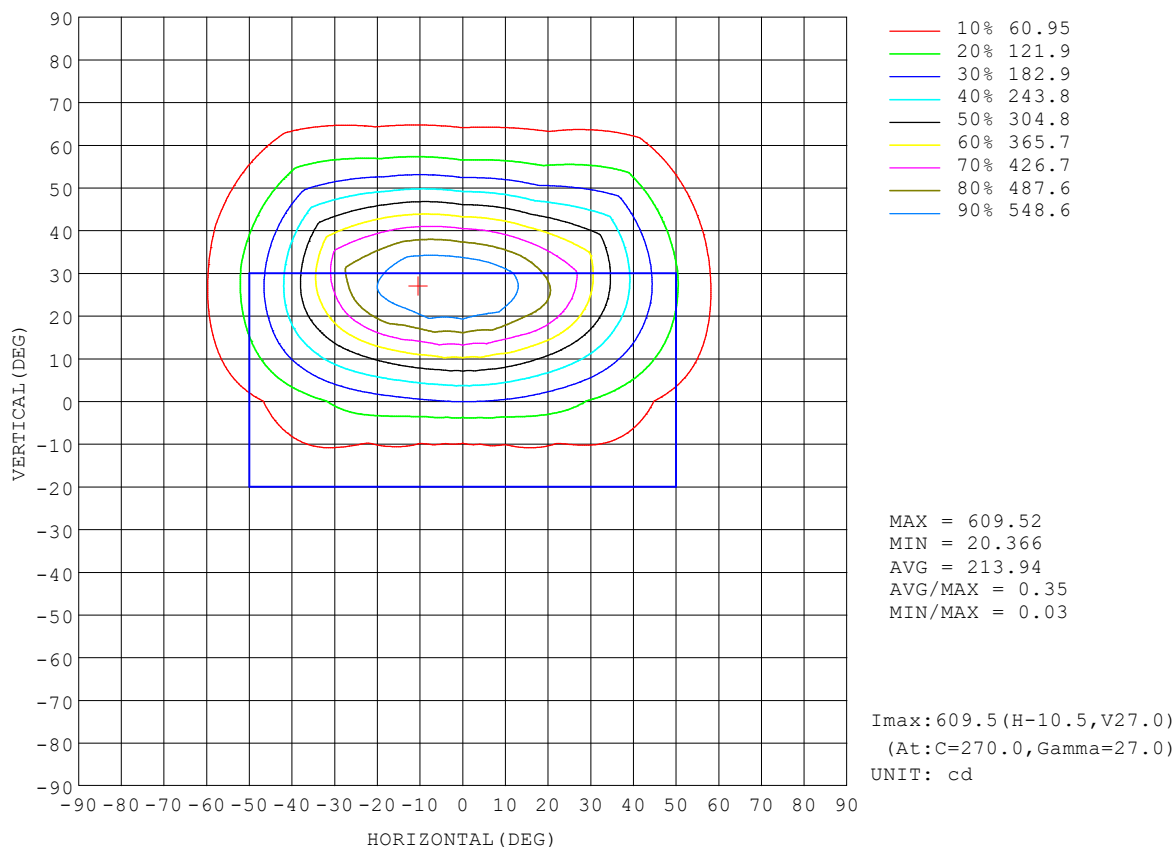
REFLECTANCE										
Ceiling	0.8	0.8	0.8	0.7	0.7	0.7	0.5	0.5	0.5	0
Walls	0.7	0.5	0.3	0.7	0.5	0.3	0.7	0.5	0.3	0
Working plane	0.2	0.2	0.2	0.2	0.2	0.2	0.2	0.2	0.2	0
ROOM INDEX	UTILIZATION FACTORS (PERCENT) $k(RI) \times RCR = 5$									
$k = 0.60$	64	53	47	63	53	47	62	53	47	41
0.80	74	64	57	73	64	57	71	63	57	51
1.00	83	73	67	81	73	67	79	73	66	60
1.25	89	81	75	88	80	74	85	78	73	67
1.50	94	86	80	92	85	79	89	83	78	72
2.00	100	93	88	98	92	87	95	89	85	78
2.50	103	97	92	101	95	91	97	93	89	81
3.00	106	100	96	104	99	95	100	96	92	84
4.00	109	104	100	107	102	99	102	99	96	88
5.00	111	107	103	108	105	102	104	101	99	90
ROOM INDEX	UF (total)									Direct
According to DIN EN 13032-2 2004			Suspended					SHRNOM = 1.25		

C Range: 0 - 360DEG  
 C Interval: 22.5DEG  
 Test Speed: HIGH  
 Temperature: 25.3°C  
 Operators: 001  
 Test Date: 2024-03-01

γ Range: 0 - 180DEG  
 γ Interval: 1.0DEG  
 Test System: EVERFINE GO-2000B\_V1 SYSTEM V2.00.456  
 Humidity: 65.0%  
 Test Distance: 7.580m [K=1.0000]  
 Remarks:

## ISOCANDELA DIAGRAM

Test:U:230.73V I:0.1021A P:12.699W PF:0.5390 Freq:49.99Hz UTHDi:0.00% ITHDi:0.00% KDisp:0 Lamp Flux:576.442x1 lm		
NAME: DL3871 12W Ra97 3000K	TYPE:	WEIGHT:
SPEC.:	DIM.:	SERIAL No.:
MFR.: VJC Lighting	SUR.: 50	Shielding Angle:



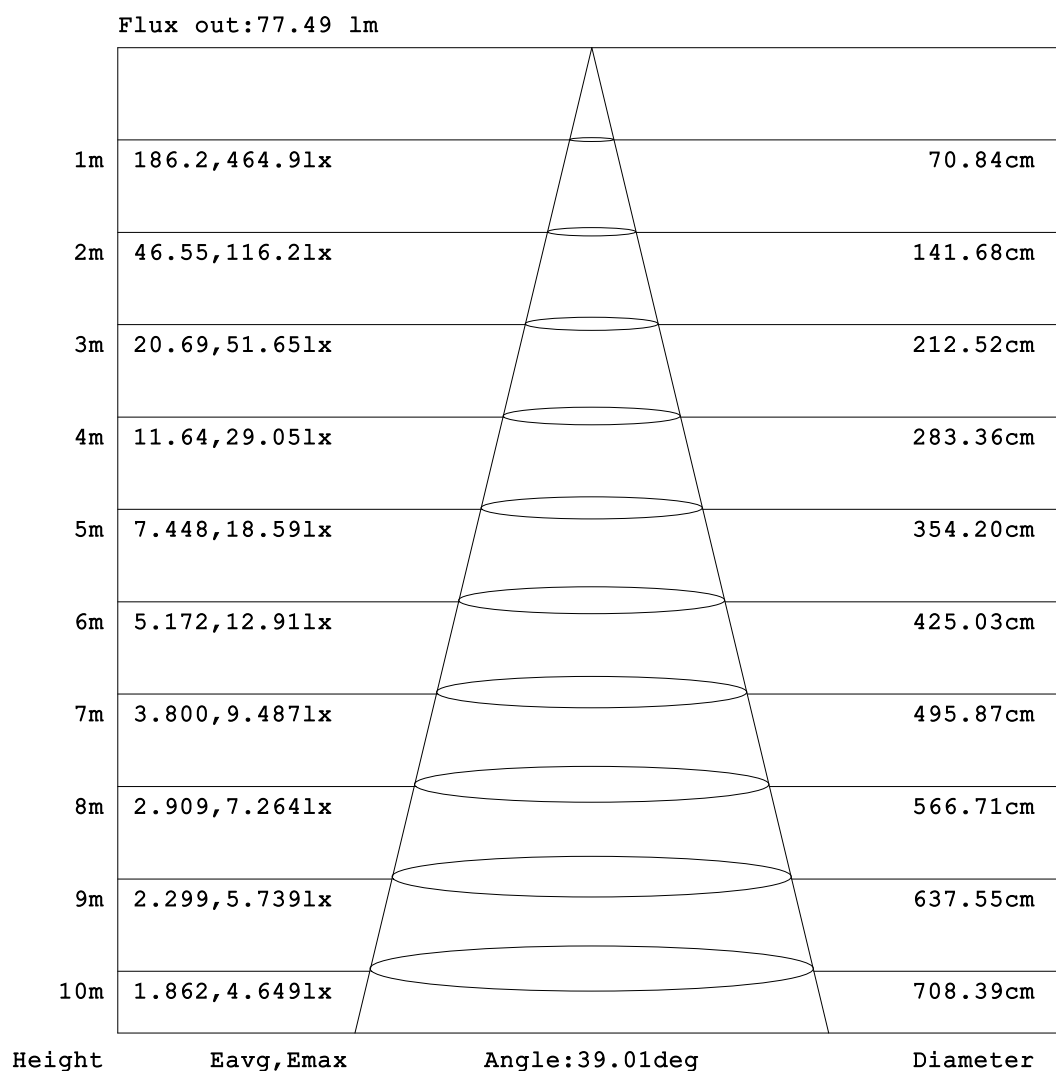
C Range: 0 - 360DEG  
C Interval: 22.5DEG  
Test Speed: HIGH  
Temperature: 25.3°C  
Operators: 001  
Test Date: 2024-03-01

γ Range: 0 - 180DEG  
γ Interval: 1.0DEG  
Test System: EVERFINE GO-2000B\_V1 SYSTEM V2.00.456  
Humidity: 65.0%  
Test Distance: 7.580m [K=1.0000]  
Remarks:



## AAI Figure

Test:U:230.73V I:0.1021A P:12.699W PF:0.5390 Freq:49.99Hz UTHDi:0.00% ITHDi:0.00% KDisp:0 Lamp Flux:576.442x1 lm		
NAME: DL3871 12W Ra97 3000K	TYPE:	WEIGHT:
SPEC.:	DIM.:	SERIAL No.:
MFR.: VJC Lighting	SUR.: 50	Shielding Angle:

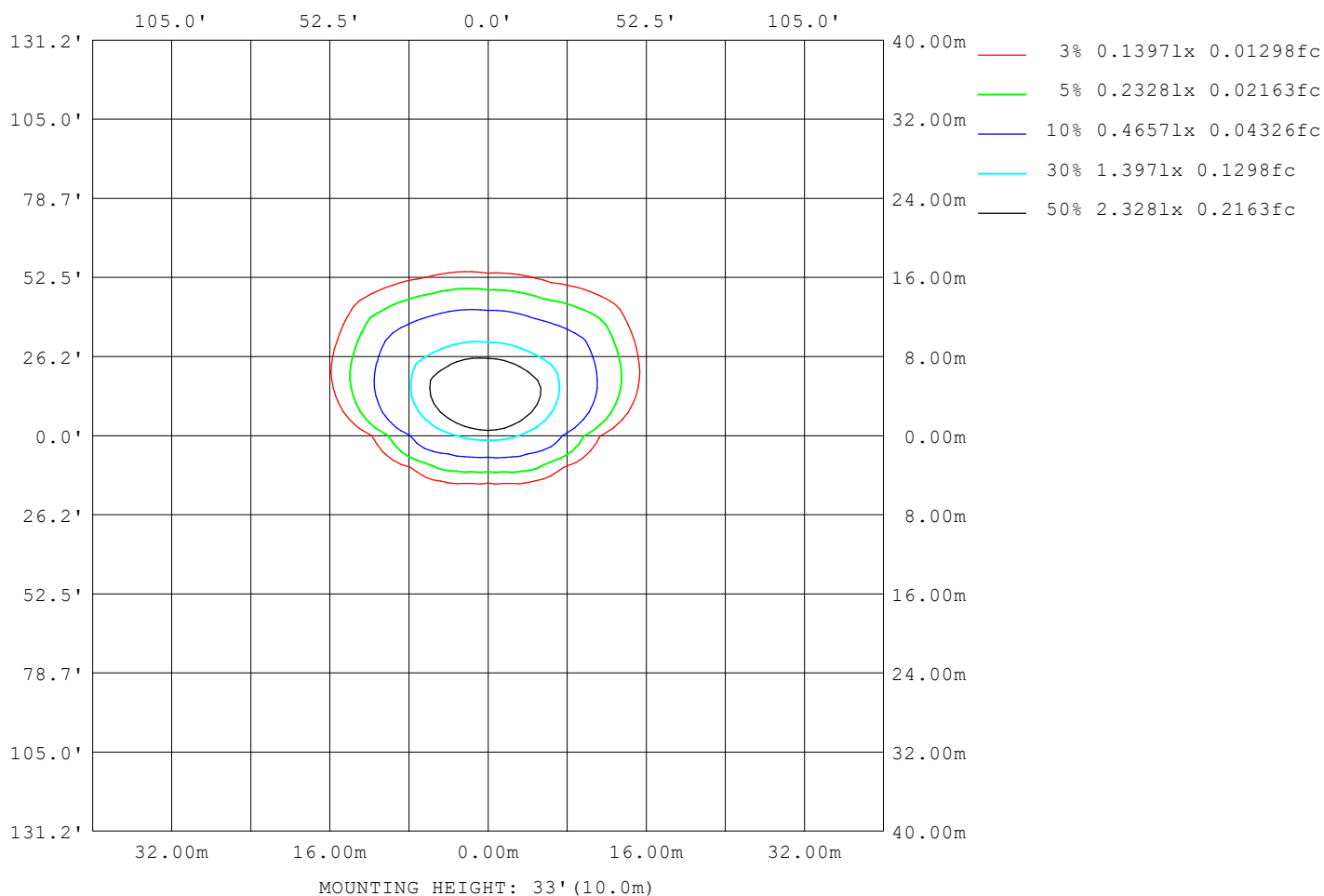


C Range: 0 - 360DEG  
 C Interval: 22.5DEG  
 Test Speed: HIGH  
 Temperature: 25.3℃  
 Operators: 001  
 Test Date: 2024-03-01

γ Range: 0 - 180DEG  
 γ Interval: 1.0DEG  
 Test System: EVERFINE GO-2000B\_V1 SYSTEM V2.00.456  
 Humidity: 65.0%  
 Test Distance: 7.580m [K=1.0000]  
 Remarks:

## ISOLUX DIAGRAM

Test:U:230.73V I:0.1021A P:12.699W PF:0.5390 Freq:49.99Hz UTHDi:0.00% ITHDi:0.00% KDisp:0 Lamp Flux:576.442x1 lm		
NAME: DL3871 12W Ra97 3000K	TYPE:	WEIGHT:
SPEC.:	DIM.:	SERIAL No.:
MFR.: VJC Lighting	SUR.: 50	Shielding Angle:



C Range: 0 - 360DEG  
C Interval: 22.5DEG  
Test Speed: HIGH  
Temperature: 25.3°C  
Operators: 001  
Test Date: 2024-03-01

γ Range: 0 - 180DEG  
γ Interval: 1.0DEG  
Test System: EVERFINE GO-2000B\_V1 SYSTEM V2.00.456  
Humidity: 65.0%  
Test Distance: 7.580m [K=1.0000]  
Remarks:

## LED Avg.L Report

Test:U:230.73V I:0.1021A P:12.699W PF:0.5390 Freq:49.99Hz UTHDi:0.00% ITHDi:0.00% KDisp:0 Lamp Flux:576.442x1 lm		
NAME: DL3871 12W Ra97 3000K	TYPE:	WEIGHT:
SPEC.:	DIM.:	SERIAL No.:
MFR.: VJC Lighting	SUR.: 50	Shielding Angle:

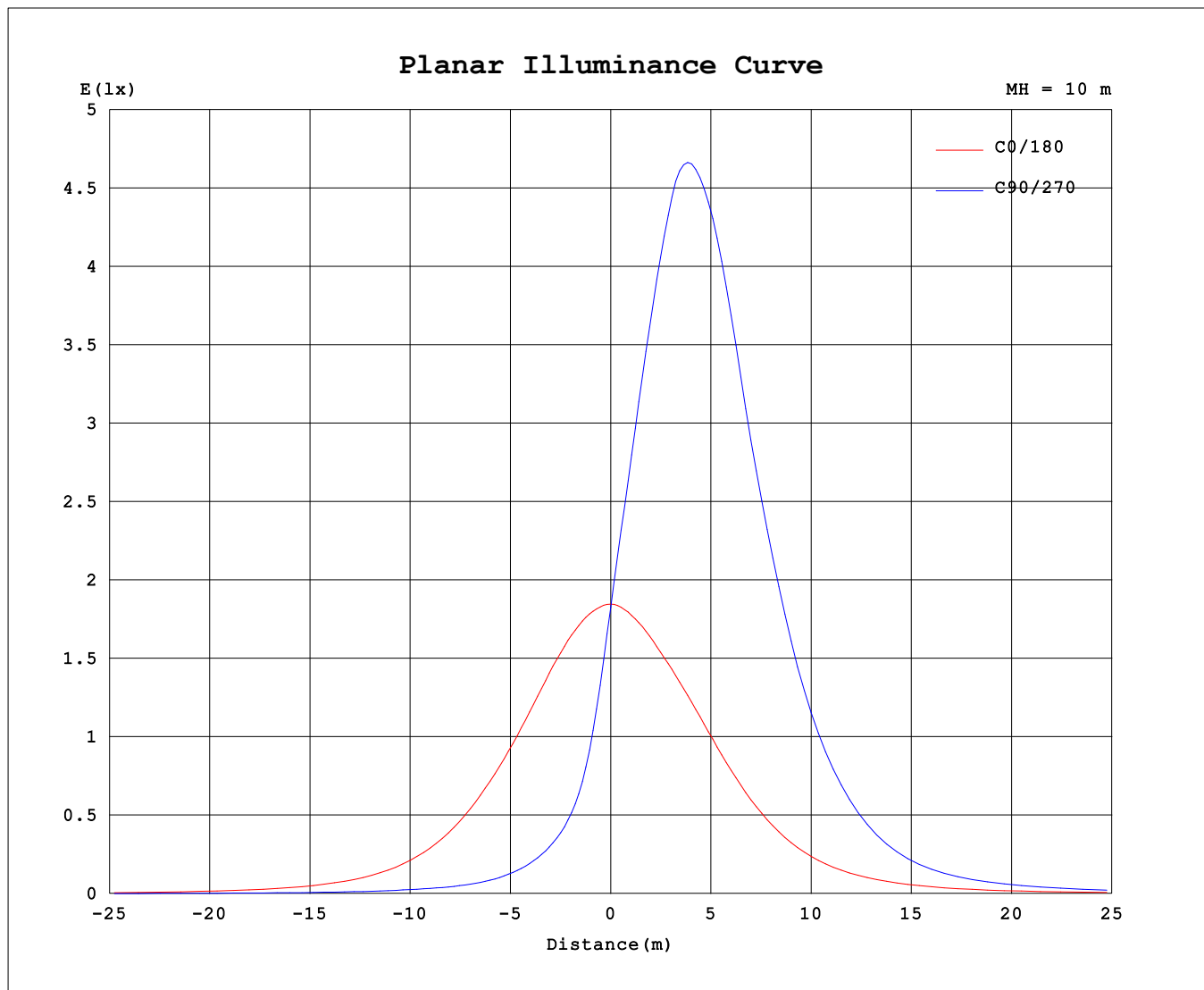
AvgL	cd/m2
L_0~180 (65) av	20874
L_0~180 (75) av	17384
L_0~180 (85) av	9304
L_90~270 (65) av	36035
L_90~270 (75) av	24723
L_90~270 (85) av	8129
L_45 (65) av	62936
L_45 (75) av	33922
L_45 (85) av	7414

Standard: GB/T 29293-2012

C Range: 0 - 360DEG  
C Interval: 22.5DEG  
Test Speed: HIGH  
Temperature:25.3℃  
Operators:001  
Test Date:2024-03-01

γ Range: 0 - 180DEG  
γ Interval: 1.0DEG  
Test System:EVERFINE GO-2000B\_V1 SYSTEM V2.00.456  
Humidity:65.0%  
Test Distance:7.580m [K=1.0000]  
Remarks:

## Planar Illuminance Curve



C Range: 0 - 360DEG  
C Interval: 22.5DEG  
Test Speed: HIGH  
Temperature: 25.3 °C  
Operators: 001  
Test Date: 2024-03-01

$\gamma$  Range: 0 - 180DEG  
 $\gamma$  Interval: 1.0DEG  
Test System: EVERFINE GO-2000B\_V1 SYSTEM V2.00.456  
Humidity: 65.0%  
Test Distance: 7.580m [K=1.0000]  
Remarks:

## LUMINOUS DISTRIBUTION INTENSITY DATA

Test:U:230.73V I:0.1021A P:12.699W PF:0.5390 Freq:49.99Hz		
UTHDi:0.00% ITHDi:0.00% KDisp:0 Lamp Flux:576.442x1 lm		
NAME: DL3871 12W Ra97 3000K	TYPE:	WEIGHT:
SPEC.:	DIM.:	SERIAL No.:
MFR.: VJC Lighting	SUR.: 50	Shielding Angle:

Table--1

UNIT: cd

C (DEG) γ (DEG)	0	22.5	45	67.5	90	112.5	135	157.5	180	202.5	225	247.5	270	292.5	315	337.5			
0	184	184	184	184	184	184	184	184	184	184	184	184	184	184	184	184			
5	182	150	126	111	106	111	125	150	181	213	241	261	268	260	241	213			
10	175	119	82.5	65.7	60.4	64.6	80.7	117	175	238	300	348	365	345	298	236			
15	165	92.0	58.0	44.1	39.8	43.3	56.3	90.6	166	261	363	441	469	433	356	253			
20	151	72.8	44.0	31.3	27.9	31.0	43.1	71.4	157	281	429	535	564	519	408	266			
25	135	59.0	34.8	22.8	20.0	22.8	34.4	58.6	145	298	491	592	609	563	456	273			
30	117	47.8	27.5	16.7	14.7	16.8	27.4	48.8	128	307	530	606	600	563	477	273			
35	98.3	38.2	21.0	12.4	11.2	12.6	21.4	39.9	109	303	534	561	530	509	466	262			
40	78.4	29.3	15.4	9.62	8.97	9.76	15.9	30.6	87.5	284	498	479	439	424	424	240			
45	60.0	21.6	11.1	7.69	7.42	7.85	11.5	22.4	67.1	248	430	378	329	325	361	210			
50	44.2	15.9	8.32	6.21	6.12	6.37	8.68	16.5	49.7	200	338	273	228	229	290	174			
55	31.9	12.2	6.44	4.98	4.96	5.12	6.75	12.6	36.2	152	247	178	143	149	218	134			
60	22.7	9.58	5.04	3.91	3.93	4.03	5.31	9.89	25.9	108	167	109	87.7	94.6	151	92.9			
65	16.2	7.56	3.90	2.99	3.02	3.10	4.13	7.85	18.4	70.0	105	66.8	56.7	60.3	95.9	58.0			
70	11.6	5.82	2.91	2.16	2.09	2.29	3.11	6.12	13.1	41.5	61.8	42.0	37.3	38.2	55.8	33.3			
75	8.31	4.21	1.96	1.28	1.11	1.45	2.20	4.54	9.33	23.1	34.5	26.2	24.0	23.7	30.2	18.4			
80	4.98	2.53	0.97	0.33	0.08	0.46	1.28	2.97	6.11	11.2	16.7	14.1	12.9	12.3	12.6	8.03			
85	0.91	0.63	0.23	0.06	0.03	0.05	0.38	1.14	2.27	2.73	3.27	3.13	2.75	1.73	1.18	0.96			
90	0.03	0.10	0.11	0.10	0.06	0.09	0.08	0.06	0.07	0.14	0.12	0.14	0.09	0.09	0.05	0.05			
95	0.04	0.17	0.19	0.17	0.12	0.15	0.15	0.11	0.11	0.04	0.03	0.01	0.00	0.00	0.00	0.01			
100	0.08	0.25	0.30	0.27	0.20	0.24	0.24	0.17	0.17	0.04	0.03	0.01	0.00	0.00	0.00	0.01			
105	0.12	0.36	0.46	0.42	0.33	0.37	0.37	0.27	0.23	0.05	0.04	0.01	0.00	0.00	0.01	0.02			
110	0.19	0.49	0.64	0.61	0.51	0.54	0.52	0.37	0.31	0.08	0.05	0.01	0.01	0.00	0.02	0.06			
115	0.27	0.64	0.85	0.85	0.73	0.76	0.69	0.50	0.41	0.12	0.07	0.01	0.02	0.00	0.04	0.10			
120	0.36	0.78	1.07	1.13	1.01	0.99	0.86	0.63	0.52	0.18	0.09	0.03	0.03	0.01	0.06	0.15			
125	0.46	0.92	1.27	1.41	1.31	1.24	1.05	0.76	0.64	0.25	0.12	0.05	0.05	0.03	0.09	0.22			
130	0.57	1.05	1.45	1.68	1.61	1.49	1.21	0.90	0.76	0.33	0.17	0.07	0.07	0.05	0.13	0.31			
135	0.68	1.15	1.58	1.88	1.86	1.69	1.36	1.04	0.87	0.43	0.24	0.11	0.10	0.08	0.19	0.41			
140	0.77	1.24	1.67	2.02	2.04	1.85	1.49	1.17	1.00	0.55	0.33	0.18	0.15	0.14	0.27	0.53			
145	0.88	1.32	1.73	2.08	2.13	1.93	1.59	1.29	1.12	0.69	0.44	0.27	0.22	0.22	0.37	0.66			
150	0.98	1.40	1.78	2.09	2.17	2.00	1.70	1.40	1.22	0.82	0.59	0.40	0.34	0.34	0.52	0.80			
155	1.10	1.50	1.84	2.11	2.19	2.06	1.81	1.51	1.32	0.97	0.76	0.57	0.51	0.50	0.69	0.95			
160	1.24	1.63	1.95	2.15	2.23	2.15	1.93	1.61	1.42	1.14	0.97	0.79	0.73	0.72	0.88	1.10			
165	1.40	1.78	2.05	2.22	2.31	2.23	2.00	1.69	1.52	1.31	1.21	1.06	1.01	0.98	1.11	1.26			
170	1.51	1.82	2.06	2.21	2.32	2.19	2.01	1.69	1.61	1.49	1.46	1.36	1.34	1.28	1.35	1.40			
175	1.61	1.82	2.03	2.11	2.19	2.07	1.93	1.68	1.67	1.65	1.69	1.66	1.68	1.59	1.58	1.52			
180	1.67	1.78	1.91	1.93	1.97	1.88	1.78	1.64	1.68	1.77	1.90	1.92	1.97	1.86	1.78	1.62			

C Range: 0 - 360DEG

C Interval: 22.5DEG

Test Speed: HIGH

Temperature:25.3℃

Operators:001

Test Date:2024-03-01

γ Range: 0 - 180DEG

γ Interval: 1.0DEG

Test System:EVERFINE GO-2000B\_V1 SYSTEM V2.00.456

Humidity:65.0%

Test Distance:7.580m [K=1.0000]

Remarks: